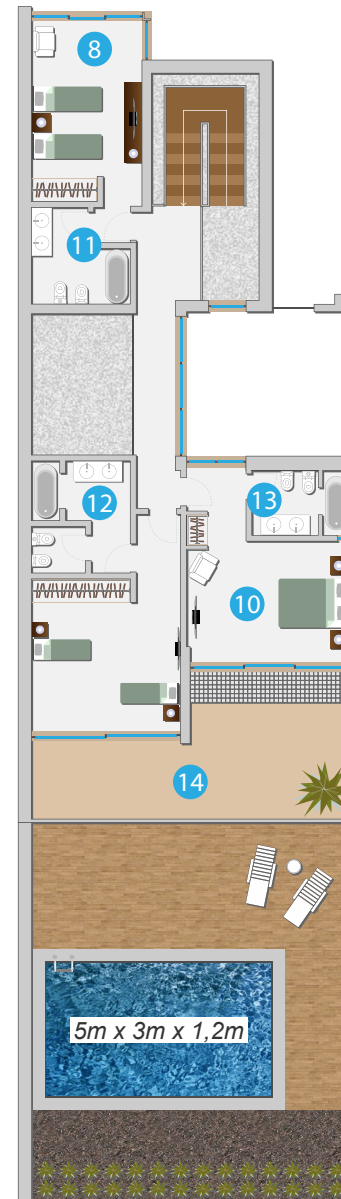


VIDAMAR TOWNHOUSE V3/CANTO DIREITO - VIDAMAR TOWNHOUSE V3/ RIGHT CORNER



PISO TÉRREO - GROUND FLOOR



1º ANDAR - FIRST FLOOR

PISO TÉRREO - GROUND FLOOR

1	Hall	9,5 m ²
2	Sala Living-Room	46,6 m ²
3	Apoio Dinning-Room	17,6 m ²
4	Cozinha Kitchen	11,7 m ²
5	Lavabo Bathroom	2,9 m ²
6	Despensa Storeroom	1,3 m ²
7	Varanda Balcony	4,5 m ²

1º ANDAR - FIRST FLOOR

8	Quarto 1 Room 1	16,7 m ²
9	Quarto 2 Room 2	19,2 m ²
10	Quarto 3 Room 3	18,7 m ²
11	Lavabo 1 Bathroom 1	6,2 m ²
12	Lavabo 2 Bathroom 2	7,9 m ²
13	Lavabo 3 Bathroom 3	5,23 m ²
14	Varanda Balcony	21,9 m ²